

ProFace X Series

Face & Palm Verification and Fever Detection Terminal



ProFace X Series is a fully upgraded version of the ProFace product line, which is designed to deal with all kinds of scenarios. Powered by the ZKTeco-customized CPU for running the intellectualized engineering facial recognition algorithm and the latest computer vision technology, the ProFace X series supports both facial and palm verification with large capacity and rapid recognition speed, boosting the security performance in all aspects.

The series also helps eliminate hygiene concerns; not only because of the contactless recognition technology it is equipped with, but also because of the new functions namely fever detection and masked individual identification.

The facial recognition capability of the series has reached a new height in the biometrics technology industry with a maximum of 50,000 facial templates, recognition speed of less than 0.3 sec per face, and ultimate anti-spoofing ability against almost all types of fake photos and videos attack.

In addition, the 3-in-1 palm recognition (Palm Shape, Palm Print and Palm Vein) is performed in 0.35 sec per hand; the palm data acquired will be compared with a maximum of 5,000 palm templates.

As mentioned above, the ProFace X series can assist in communicable disease surveillance as well. During outbreaks of infectious and contagious diseases, recognition terminals with fever and mask detection should be a perfect choice. The series enables fast and accurate body temperature measurement and masked individual identification during facial and palm verification at all access points, which is extremely helpful in fighting the spread of disease outbreaks especially in hospitals, factories, schools, commercial buildings, stations, and other public areas.

Features

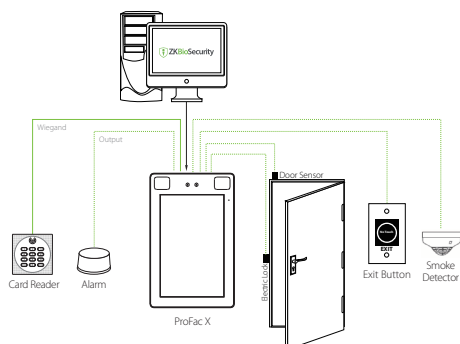
- Ultra-large capacity of facial templates for 1:N verification: 30,000 (standard); max. 50,000 (optional)
- Huge capacity of palm templates; 1:N - 5,000 palm templates
- Anti-spoofing algorithm against print attack (laser, color and B/W photos), videos attack, and 3D mask attack
- Intelligent energy-saving design; precisely evaluation of the distance (up to 2.5m (8.2ft)) between the user and the device by a microwave detector before waking up the recognition terminal
- 2MP starlight CMOS sensor camera with WDR function, which enables the terminal to recognize faces under extreme lighting conditions (0.5 lux – 50,000 lux)
- 8" touch screen with 400 lux, which offers high visibility under strong and direct light
- IP68 dust-proof and waterproof standard & IK04 protection standard
- Wide range of working temperature (-30 ~ 60°C; -22 ~ 140°F)
- Body temperature detection: measurement deviation of $\pm 0.3^{\circ}\text{C}$; measurement distance of 30 – 50cm
- Mask detection; facial verification available with masks

* Facial verification for masked individuals will increase FAR. Palm verification for masked individuals is recommended.
Temperature measurement data is for reference only, not for medical use

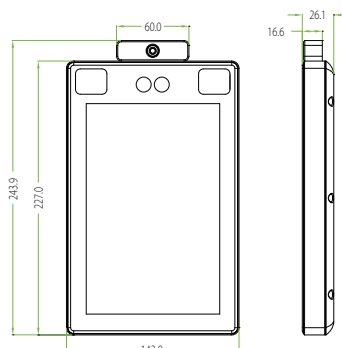
Specifications (GL: GL Exclusive Feature)

Capacity GL Faces 30,000 (1:N) 50,000 (Optional) Palm 5,000 (1:N) Users / Cards 50,000 GL Transactions 1,000,000 (Optional) 2,000,000 User Photos 30,000 Event Photos 10,000 * Proface X[TD] doesn't support card		Access Control Interface Lock Relay Output Alarm Output / Auxiliary Input Exit Button / Door Sensor	Communication TCP/IP Wiegand Input / Output Wi-Fi (Optional) RS485 / RS232
Compatibility Security Relay Box Wiegand / RS485 / RS232 Slave Reader with FP / RFID / Barcode / QR-code ZKBioSecurity Software		Special Functions GL IP68 & IK04 GL 0.3s Hight Speed Facial Verification Liveness Detection HTTPS Communication Encryption (Optional) GL Event Snapshot	Additional Info Face Algorithm: ZKLiveFace5.8 Palm: FAR $\leq 0.01\%$; FRR $\leq 1\%$ Working Temperature: -30°C ~ 60°C, (-22°F ~ 140°F) Working Humidity: $\leq 93\%$ Storage Temperature: -40°C ~ 65°C Storage Humidity: $\leq 93\%$ Net Weight: 853g Dimensions (H*L*D): 227*143*26.1mm
Hardware GL 900MHz Dual Core Customized AI CPU GL 512MB RAM / 8G Flash 8" Hight light (400lux) IPS Touch LCD GL 125KHz EM Reader / 13.56MHz MF(Optional) 2MP WDR Low Light Camera Adjustable Light brightness LED Hi-Fi Voice High Sensitivity Microphone Distance Detection Sensor Reset Button and Tamper Switch		Standard Functions: Access Levels, Groups, Holidays, DST, Duress Mode (Password), Anti-Passback, Record Query, Tamper Switch Alarm, Custom Wallpaper & Screen Saver	Power Operating Voltage: 12V DC Current Draw: < 2,000mA
		Antiepidemic Mask detection Body temperature detection (ProFace X [TD] Only) Temperature Measurement Distance: 30cm~50cm (1ft~1.64ft) Temperature Measurement Accuracy: $\pm 0.3^{\circ}\text{C}$ Temperature Measurement Range: 34°C~45°C	

Configuration



Dimensions (mm)



ZKTECO CO.,LTD.
www.zkteco.com
E-mail: sales@zkteco.com

Copyright©2020 ZKTECO CO., LTD. All rights reserved.
V2.0 2020.03.05